

DEVON AND EXETER RAIL PROJECT WORKING PARTY

15 July 2016

Present:-

Devon County Council:

Councillors Ball, Biederman, Bowden, Eastman, Julian, Mathews, Sellis, Way, Westlake and Younger-Ross

Exeter City Council

Councillors Sutton, Wardle and Leadbetter

East Devon District Council

Councillors Bailey and Longhurst

Mid Devon District Council

Councillor Snow

Teignbridge District Council

Councillors Goodey and Prowse

Torbay Council

Councillors Doggett and Manning

Members attending in accordance with Standing Order 25:

Councillor Greenslade

Apologies:

Councillors Hughes, Squires, Flynn, Deed and Luggar

9 **Minutes**

RESOLVED that the minutes of the meeting held on 19 February 2016 be signed as a correct record.

10 **Update from Great Western Railway**

(Councillor Greenslade attended in accordance with Standing Order 25(2) and spoke to this item).

Mr L Ward, Regional Development Planning and Programme Manager, gave a presentation which covered:

- passenger growth
- performance
- fleet update
- speed to the West
- stations investment
- depot investment
- community rail

Matters discussed by Members with Mr Ward included:

- the Tarka line - Barnstaple growth; the need for early train to Exeter St David's; and increased passenger capacity to be resolved by expansion;

- the use of Class 143s on the Exeter – Okehampton Sunday Rover service when available;
- new developments leading to population growth at Exminster and Bideford;
- lack of crossovers at Teignmouth.

[NB A copy of the presentation given is appended to these Minutes]

11 Update from South West Trains

Mr C Loder, Head of Service and Pricing Strategy at South West Trains provided an update, and matters discussed with Members included:

- refurbishment of the Class 159s, made up of 3 cars/200 seats;
- availability of Wi-fi from the end of March - good feedback received;
- Cranbrook Station - dealing with around 100 people a day with busiest train being the 0710 from Waterloo;
- additional Yeovil – London morning train;
- popular Summer Saturday service to Weymouth;
- changes to timetable from December 2016 to cater for large capacity events e.g. Saturday rugby matches;
- additional stations and the difficulties with infrastructure and capacity;
- opportunity for direct route Barnstaple - Waterloo;
- two shortlisted bidders for the new SW rail franchise – SWT had operational capability to June 2017.

12 Progress Report

The Working Party considered the Report and presentation of the Head of Planning, Transportation and Environment (PTE/16/19) on progress made by the County Council and rail project partners since its February 2016 meeting and further planned work in 2016/17 on the following ExeRail and other projects:

- Peninsula Rail Task Force – final report to be submitted to Government shortly;
- Marsh Barton Station – interim stopping pattern currently with full calling pattern planned from December 2018;
- Exeter St David's – National Stations Improvement Programme funding secured;
- Exeter – Honiton – feasibility of second station; and the Network Rail GRIP 2 study on Exeter;
- Tavistock Extension (the Drake Line) – design options progressing;
- Exmouth – enhancements to Station;
- Service Enhancements on the Sunday Rover, Avocet and Riviera Lines;
- Tarka Line Strategy – partnership working to improve journey times and car parking;
- Bus Real Time Information at Stations – expected to go live in the autumn;
- Electric Bikes – Department for Transport funding secured by Co-Cars as part of Devon Metro strategy.

Matters discussed by Members with the Head of Service included, inter alia:

- recognition of all partners to the opportunities on the Tarka Line and those included within the Tarka Strategy;
- GPS fitted to electric bikes and the security managed by Co-Cars;
- the work ongoing in relation to the Tavistock (Drake Line) and the complexities of the scheme;
- timing of stops at Lapford and access difficulties.

Members questioned the Listed Building status of the 'red brick building' to the front of Exeter St David's station and Mr Ward from GWR agreed to check this and apprise Members at the next meeting.

[NB A copy of the presentation given is appended to these Minutes]

13

Next Meeting

RESOLVED that the next meeting of the Working Party be held on Friday 17 February 2017 at 2pm.

The Meeting started at 2.00 pm and finished at 4.21 pm

Great Western Railway

GWR Business Update for Exerail July 2016

Lewis Ward
Regional Development
Planning & Programme Manager

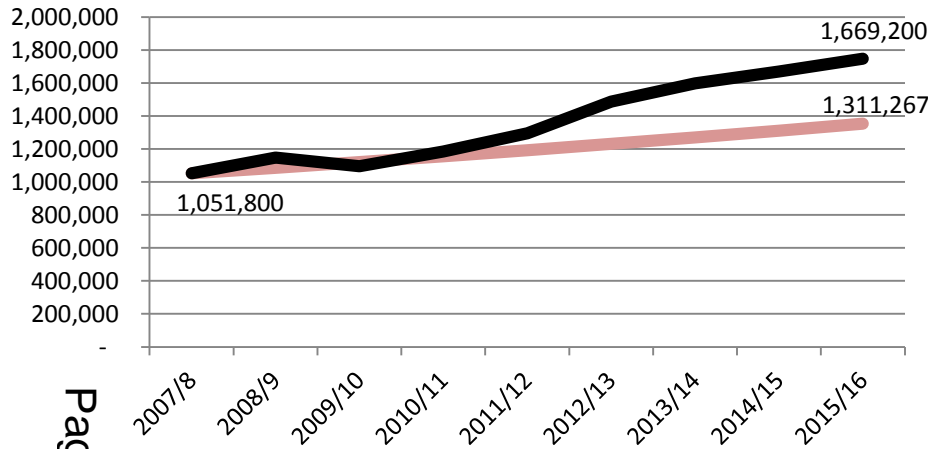


Presentation contents

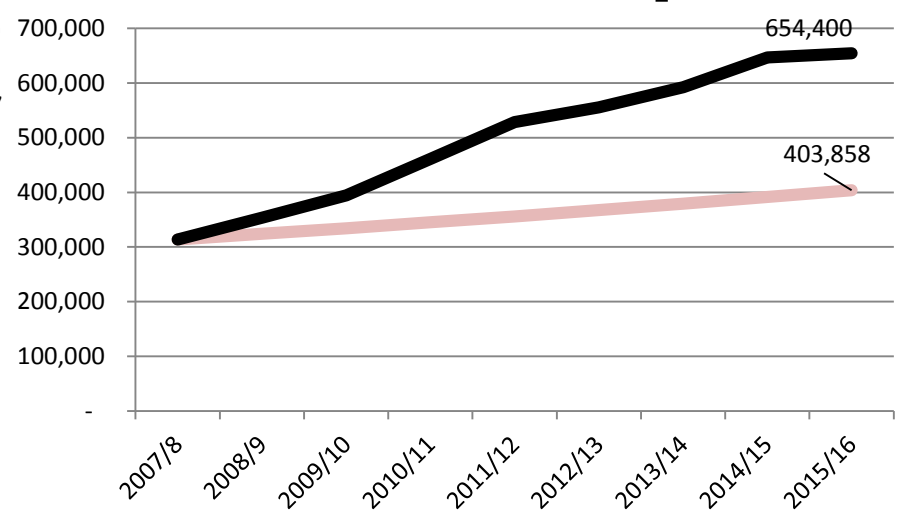
- **Passenger growth**
- **Performance**
- **Fleet update**
- **Speed to the West**
- **Stations Investment**
- **Depot Investment**
- **Community Rail**

Growth in Rail Travel across Devon

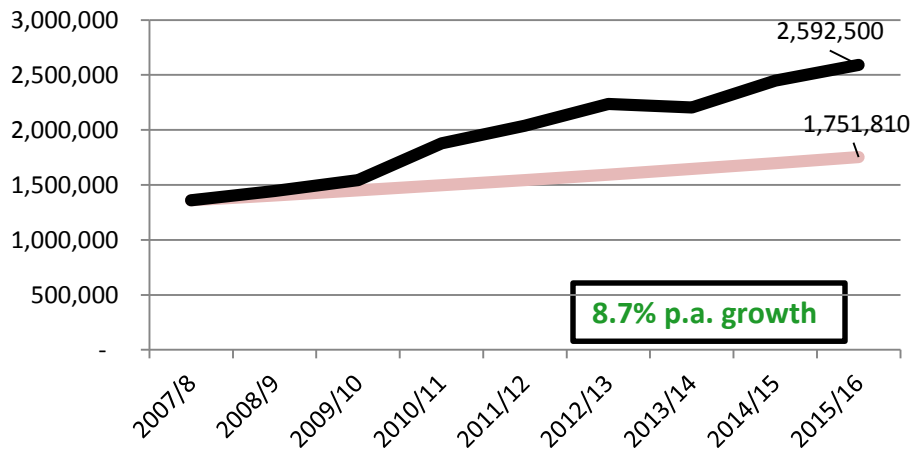
Exeter – Exmouth



Exeter – Barnstaple



Exeter – Paignton / Plymouth



The darker line shows actual growth which is consistently above the lighter line which shows the Great Western RUS, 2010 assumption of 3.2% growth PA

DfT research shows growth on Community Rail Lines averages 2.8% per annum above regional average

Minute Item 10

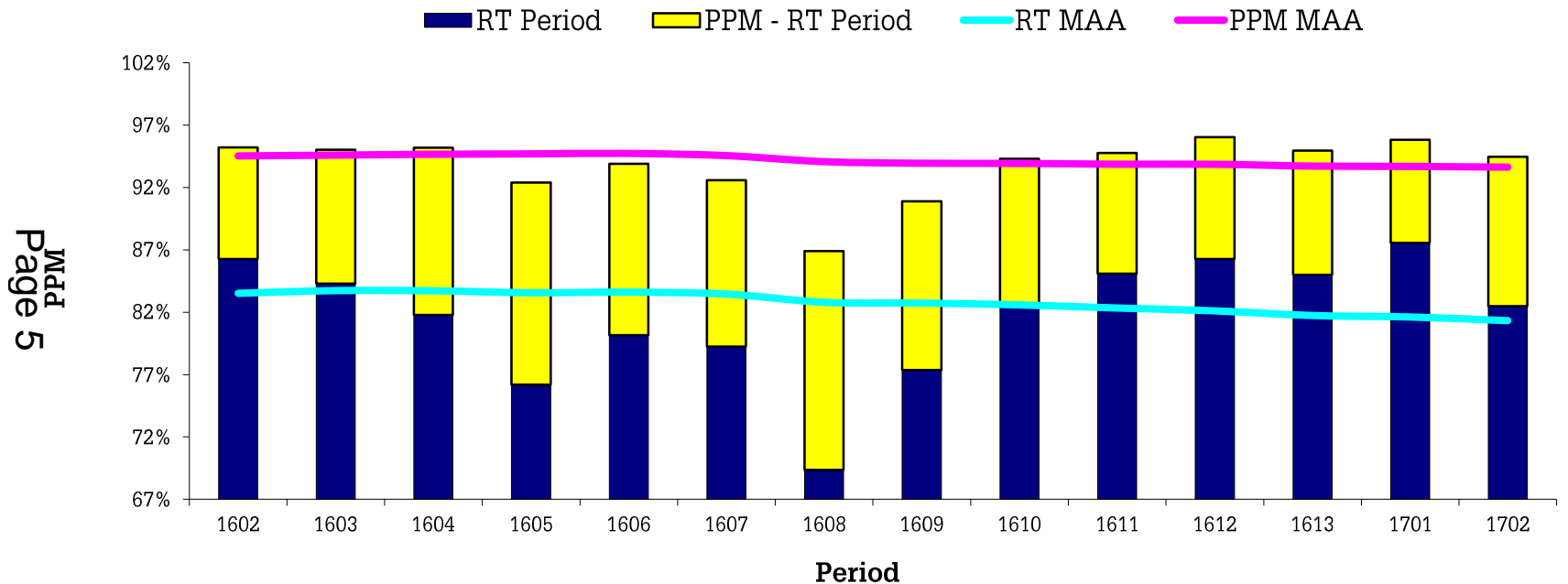
Newcourt 'Top 10'

Destination	%	
Exeter Central	49	73,832 journeys in the first year (June 2015 – June 2016)
Exmouth	10	
Exeter St Davids	3	64% of journeys are wholly within the Avocet Line
Popsham	2	
St James' Park	2	
Digby & Sowton	2	London ranks at number 22 in the list
Teignmouth	2	
Exeter St Thomas	1	
Polsloe Bridge	1	Many destinations, far and wide, make up the balance
Lympstone Village	1	

Performance

Devon Metro Services

All Day PPM: Period v MAA



Public Performance Measure (PPM) of 93.6% achieved over the last year

The local Devon target is 92%

GWR fleet update



- The new Intercity Express Train carries first passengers
- Refurbished Class 150/2 trains being rolled out in the West
- Exeter depot expansion plans progressing

Intercity Express Trains being built in the UK at Newton Aycliffe

Page 7

Minute Item 10



And being tested on our network...

Minute Item 10



Page 8

Journey Time Study

- **'Speed to the West'** Study into journey time improvements between London and the South West peninsula nearing completion
- Will inform Peninsula Rail Task Force (PRTF) report to DfT on 20 year strategy
- PRTF strategy also looking at long term resilience for the line
- Report expected after the summer



Study funded by GWR to look at maximising the benefits of the AT300 trains introduction



Stations investment

£50m of Franchise investment in addition to investment from local authorities:

- Tiverton Parkway car park extension under construction
- Planning for Newton Abbot gateline underway
- Funding secured for gateline & concourse improvement at Exeter St Davids
- Ready to go at Exmouth!
- Torbay Council investment in mobile ticketing on Devon Metro (Autumn)
- Discussing platform extensions with DCC and LEP to support Devon Metro

Page 10

Minute Item 10



NSIP improvements at Exmouth Station to match DCC investment in frontage

Exeter Depot Improvements

- GRIP 3 feasibility design complete by September 2016
- Commencement of works on-site early Q2 2017

Page 11

New depot ready by March 2018

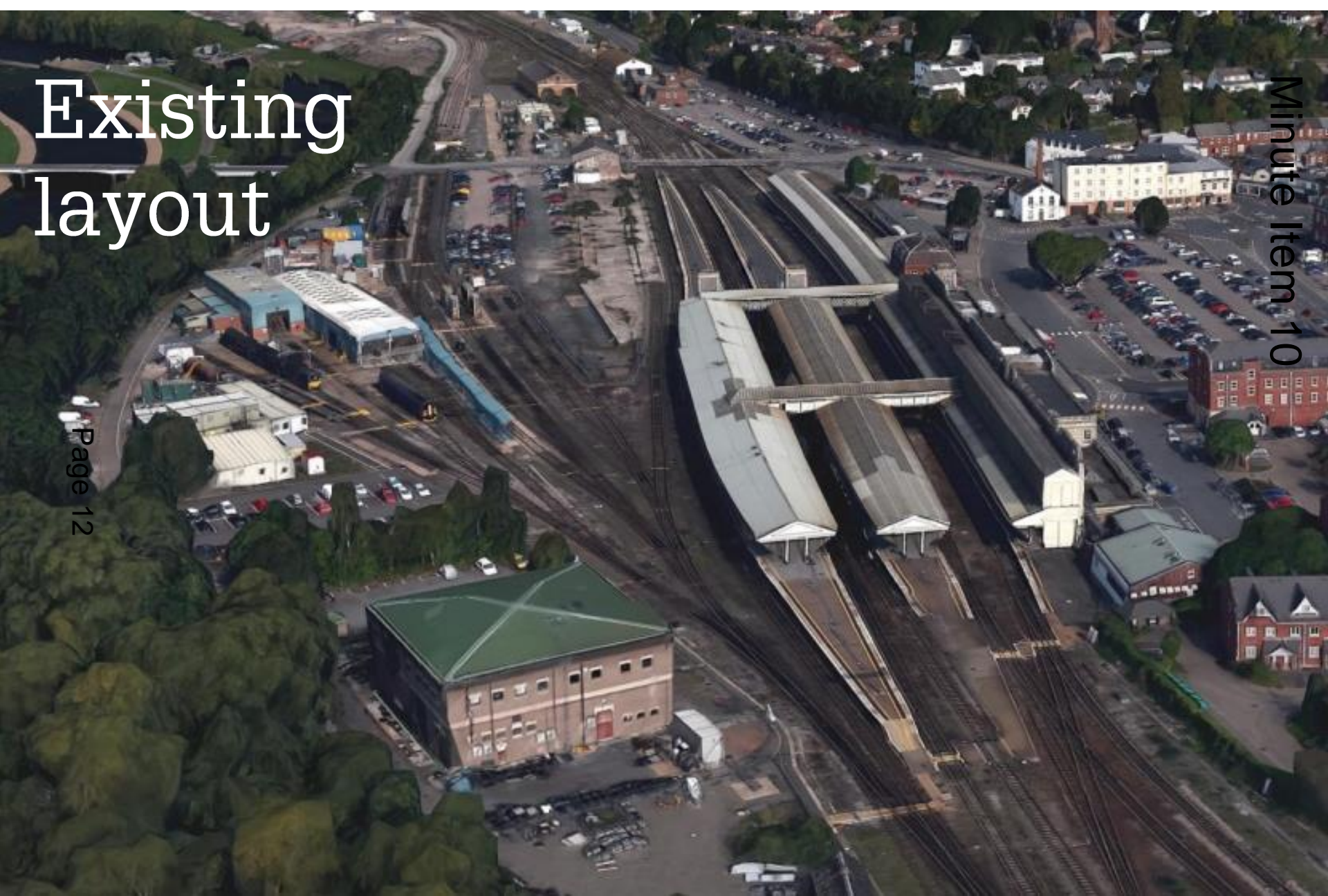
- Supporting enhanced Devon Metro services from December 2018
- Enables comprehensive improvement of forecourt area

Minute Item 10

Existing layout

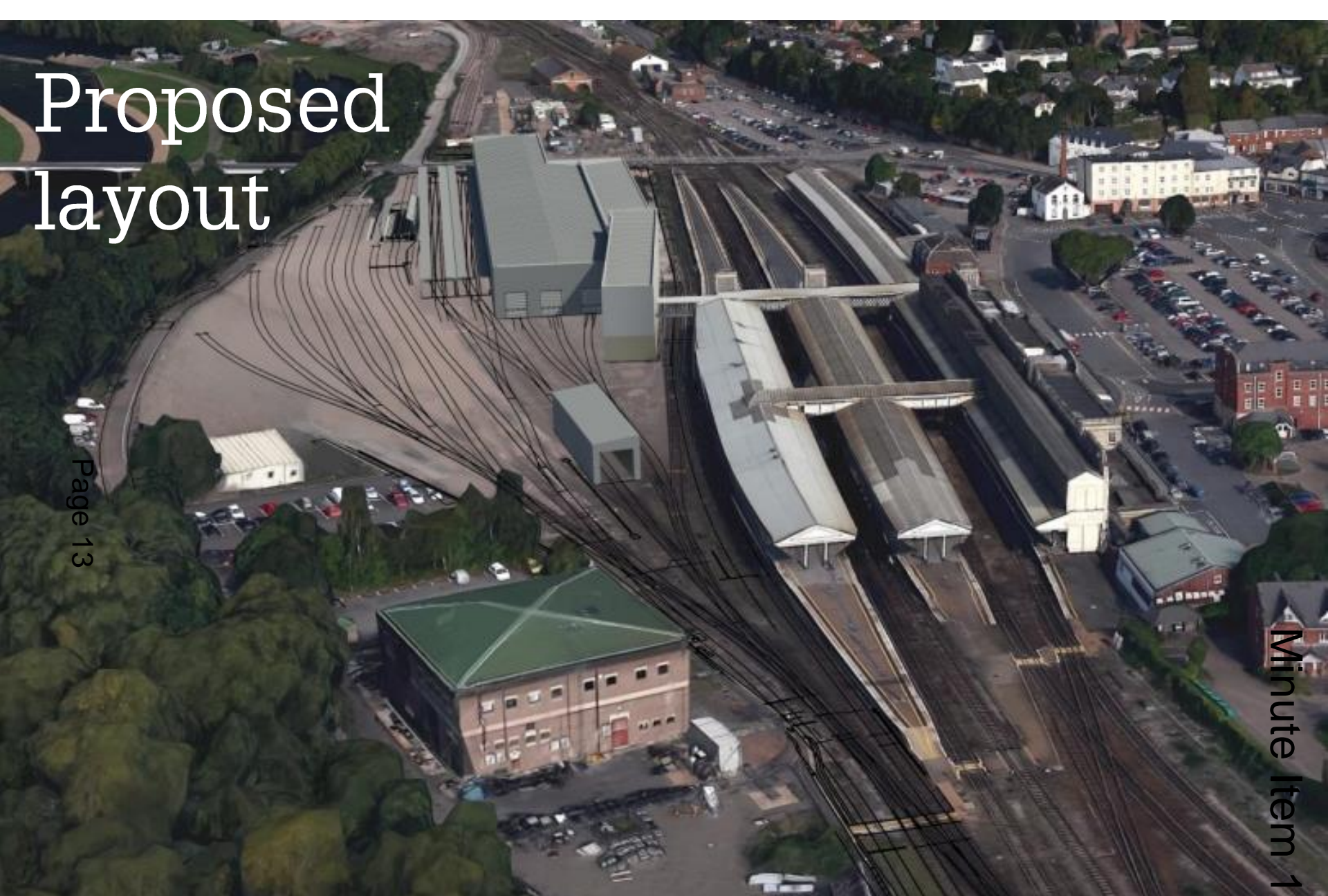
Minute Item 10

Page 12



Proposed layout

Page 13



Minute Item 10

Proposed layout

Minute Item 10

Page 14



More highly skilled jobs based here in Devon

Page 15

Minute Item 10

GWR

Community Rail

Investment in Community Rail Partnerships

- Customer & Communities Fund projects for Polsloe Bridge (access improvements) and St James' Park (shelter improvements) in design
- Customer & Communities Fund Round 2 bids received, includes 7 projects in Devon and 3 in Torbay
- North Devon Line Promotion Group first meetings held and work programme started
- Further Avocet Line marketing (led by Devon & Cornwall Rail Partnership)



Community Rail



Page 17

Year round extra Sunday trains, championed by the Avocet Line Rail User Group and supported by Devon County Council

Minute Item 10



Community Rail

Minute Item 10

Page 18

**Okehampton Summer Sunday Services,
funded by Devon County Council**



Summary

- New Intercity Express Trains being tested
- Investing in high speed services (speed to the West)
- Investment for new car parks, gatelines, smart ticketing
- Depot improvement plans progressing
- Investing in communities (CCIF Round 2)
- Enhanced services running (Exmouth & Okehampton)

Thank you

Page 20



Exe Rail Progress Report July 2016

Page 21

Minute Item 12

Peninsula Rail Task Force (PRTF)

- Five Local Authorities working together
- Three Point Plan coming together into a single report
 - Resilience
 - Connectivity through improved journey times
 - Capacity/Quality
- Consultation for draft document was open until 27th May – gave stakeholders the opportunity to make comments
- Final report submitted to Government at the beginning of the month

Page 22



**PENINSULA RAIL
TASK FORCE**

Marsh Barton Station

- Scheme approved in July 2015 – cost estimates at £7.4m
- Site clearance works are complete – work ongoing to finalise the design and complete the necessary consents
- Construction expected to start in Autumn 2016 subject to confirmation of necessary consents
- Interim stopping pattern at station planned from December 2017 to December 2018
- Full calling pattern is planned from December 2018 to coincide with the rewrite of the timetable – including new long distance rolling stock



Exeter St David's Station Forecourt

- National Stations Improvement Programme (NSIP) funding secured by GWR to improve capacity of entrance
- Expected to start in second half of 2016
- GWR also funding an initial phase of design work to develop a long term strategy for the wider forecourt area.
- Plans to upgrade the rolling stock depot to the rear of the station

Page 24



- Following the opening of Cranbrook Station in December 2015, a feasibility study was undertaken to establish the feasibility of creating a second station to the eastern end of the development
- There is now an ongoing study to investigate further the possible location
- Network Rail are also progressing a GRIP 2 study on Exeter – Castle Cary via Yeovil enhancements to improve resilience for diverted Great Western services in times of disruption. This has included infrastructure options to enable a half hourly frequency between Exeter and Honiton

Exmouth Station redevelopment

- First stage of station enhancement works completed
- Second stage works due to begin later in 2016. These include:
 - Access to trains via front entrance at all times
 - Improved internal building configuration
 - New ramp to better standard gradient
 - Seat incorporated into outside perimeter of ramp
 - Automatic door
 - Prominent signage in line with new brand
- Planning application for the redevelopment of the bus station for an M&S Simply Food store approved at East Devon Planning Committee in March

Page 26



Service Enhancements

Okehampton

- Sunday Rover services between Okehampton and Exeter began on May 15th and will run for 18 weeks – initial indications are that passenger numbers have been very high

Avocet Line

- Half hourly service during the day on Sundays introduced on the Avocet Line for a 12 month period

Riviera Line

- DCC contributed funding to continuing the enhanced Riviera Line service between Newton Abbot and Paignton until December 2018

Electric Bikes

- DCC is working in partnership with Co-Cars to create a network of electric bikes for hire by the hour across Exeter.
- Some of the electric bikes will be located at rail stations so ties in with the Devon Metro Strategy.
- The stations currently planned to have docking stations in the first phase are:
 - Exeter St David's
 - Exeter Central
 - Digby & Sowton
 - Dawlish Warren
- The first phase also includes a number of key employment sites in Exeter including the University, Civic Centre and County Hall.

Page 28

